



Josephine Avenue, Brixton, SW2

2 bedroom flat - conversion for sale

£600,000

Share of Freehold

## Property Details

This beautifully presented two double-bedroom end of terrace Victorian conversion apartment benefits from an off-street parking space and a private outdoor space accessed directly from the apartment, set on a flat roof with exclusive use. Set back from the road, this first-floor apartment is thoughtfully arranged and has been improved by the current owners, blending period character with modern comforts. The heart of the home is the impressive reception room at the front, bathed in south-easterly light through a bay window with elegant sash windows. Exposed floorboards and calming neutral tones create a warm and inviting atmosphere, with clearly defined areas for dining and lounging. Adjoining the reception is a semi-open-plan kitchen with cream cabinetry, contrasting quartz worktops, a Bosch oven, gas hob and integrated dishwasher. The principal bedroom offers a serene retreat with exposed floorboards and built-in wardrobe. A short flight of stairs leads down to the bathroom and the second bedroom, which features bespoke built-in cabinetry and a glazed door opening onto the roof terrace. The private outdoor retreat is finished with decking and provides an ideal space for entertaining or relaxing.

Council tax band C    EPC rating C (76)

## Features

- Two double bedrooms
- Victorian conversion
- New kitchen with quartz worktops
- Outdoor space set on a flat roof terrace
- Demised allocated off-street parking space
- Characterful features
- Sought-after quiet residential street, set back from the road
- Five minute-stroll to Brockwell Park
- Short walk to Brixton and Herne Hill town centres
- Share of freehold

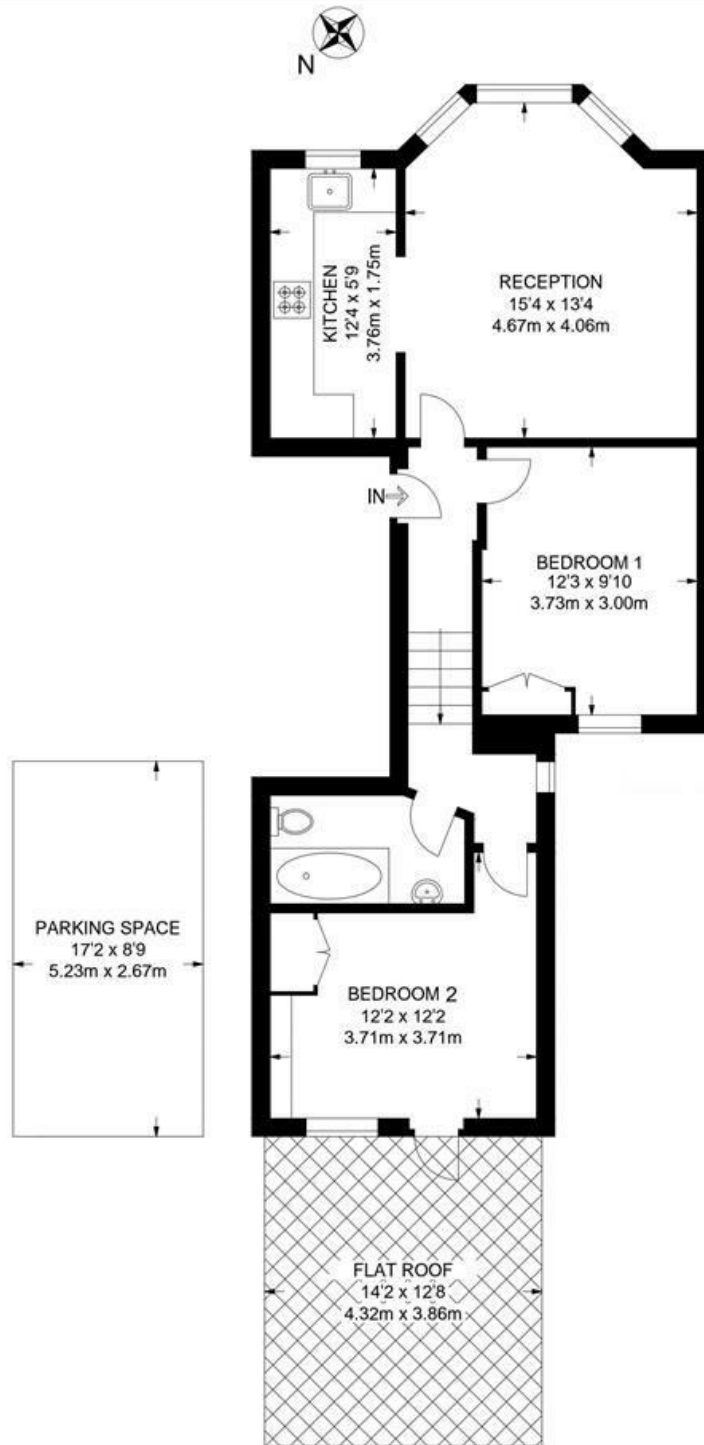




Josephine Avenue, Brixton, SW2

**Josephine Avenue, SW2**  
**2 Bedroom Flat**

APPROXIMATE GROSS INTERNAL AREA: 637 SQ FT / 59 SQ M



**FIRST FLOOR**



While we try our very best, floor plans are produced as a guide only and we take no responsibility for the precise accuracy with which any property is represented.

Josephine Avenue, Brixton, SW2

